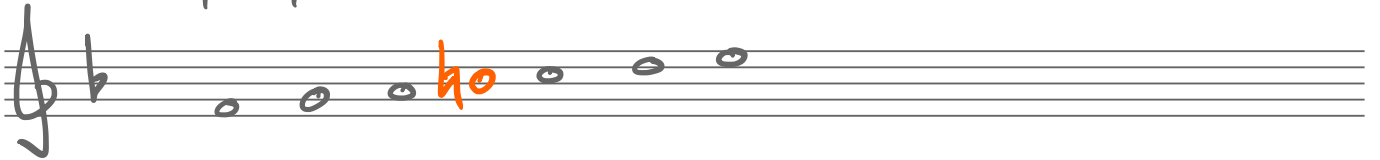


# Notation

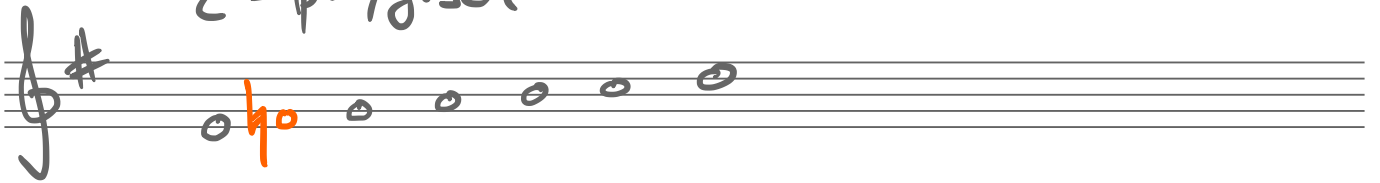
A-dorisch



F-lydisch



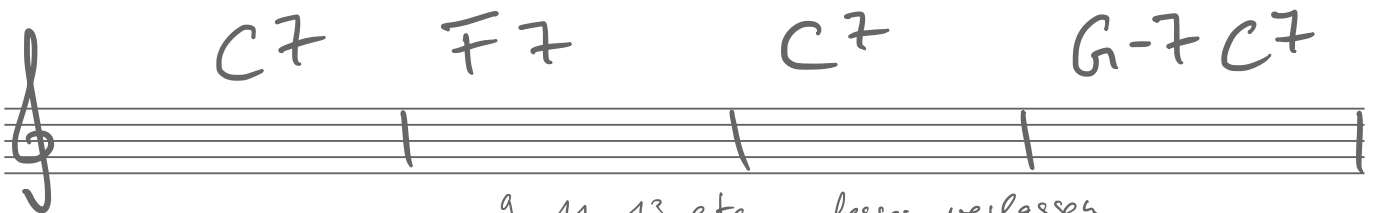
E-phrygisch



Taktmitte



Fähnchen



9-11-13 etc. besser weglassen



# Akkorde

C C+ C- Co Csus4 Cadd2

Caug Cmi Cm

CΔ CΔ7 Cmaj7 Cmaj7 | C6 C6/9

C-7 Cm7 Cmi7 Cmi7 | C-6 etc.

C7 (C9 = C7/9) (C13 = C7/13) C7b9 = C7-9

C-7b5 Cϕ Cϕ7 Cmi7b5

F/c